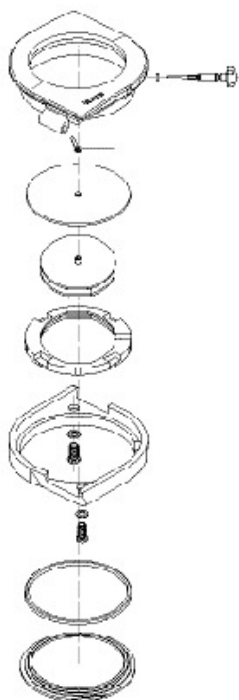


Reference:
04.153.0473.3.001



	Reference	Name
Kit		
→	90.0096	Set for waterproofness
Components		
→	03.153.021	Movement
→	05.0473.010	Dial Cerix, S, grey
→	06.1991	Hands CERIX, S, black
→	40.1041	Screw ø 2.00 x S1.20 x Lt 3.35
→	40.1041	Screw ø 2.00 x S1.20 x Lt 3.35
→	40.6102	Joint de Tige ETA Z0026029, 0.60 x 0.35
→	40.6154	case spare parts
→	40.6154	case spare parts
→	40.8493	Movementring
→	47.4503	Back seal 18,5 x 0,75/0,62 Asutan
→	48.629	Crown Cerix S
→	55.1101.01	Crystal met. Cerix S, chrom./black
→	56.1023.00	Lunette/Coiffe Cerix S
→	82.153.0473.3.010	Case back